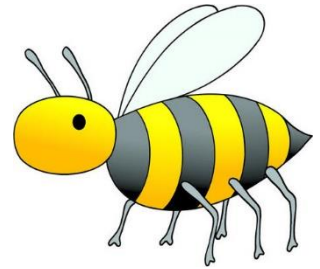




## Facts about bumblebees

Pollination is very important because it helps plants, flowers and food crops to grow, so that we have lots of lovely things to eat. One in every three spoonfuls of our food started off as crops pollinated by bees and other insects. And food such as tomatoes, aubergines, blueberries and cranberries all rely on bumblebees.

## Video zone



So how does it work? Well, when a bee lands on a flower to feed and suck up nectar or gather pollen, extra pollen sticks to the hairs on its body. When the bee flies to the next flower, the extra pollen from the bumblebee's body sticks to the new flower, and this is called pollination. When the pollen reaches the right part of the new flower, it turns the flower into a fruit that contains seeds from which new plants can grow.

Farms all over the world rely on bumblebees to spread pollen around their crops. Imagine that. What clever bumblebees!

Watch this video <https://learnenglishkids.britishcouncil.org/video-zone/facts-about-bumblebees>