



## How to build a robot buddy

How to make your very own robot buddy! His eyes move and he has a secret compartment!

You will need a foil-wrapped tissue box, two painted cardboard tubes, two painted egg cartons, two milk bottle lids, foil-wrapped card, card and stickers, foil, sticky tape and glue.

Stick the card over the tissue box hole to make your robot's door. Make sure the card is big enough to cover the hole.

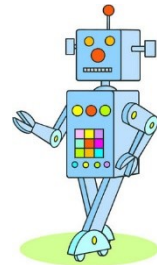
Stick the painted egg cartons on either side of the tissue box and two cardboard tubes on top.

Roll a big piece of foil into a sausage shape and bend it. Flatten and glue the ends of the foil to the inside of the milk bottle lids.

Once dry, slide the eyes into the cardboard tubes. Stick on some folded card for arms, a colourful control panel, a mouth and even a bowtie, like Robert the robot!

Your robot buddy is ready to activate!

## Video zone



Watch this video <https://learnenglishkids.britishcouncil.org/en/video-zone/how-build-robot-buddy>