

## A: Egyptian Animals.

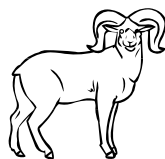
Animals were very important in Ancient Egypt for different reasons. Some animals were for food, some for pets, some were dangerous, and some had religious importance. Match the animals to the texts saying why there were important.



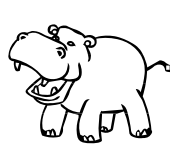
cat



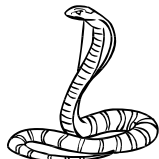
dog



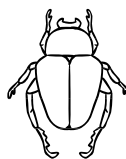
ram



hippo



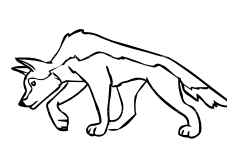
cobra



beetle



crocodile



jackal

a) This animal was 'man's best friend'. It was used as a pet, but also for hunting and guard duty.

b) This animal was dangerous in the River Nile and grew up to six metres in length.

c) This animal was sacred. People used it to catch mice and rats. It was a demigod and symbolised by the Goddess Bast.

d) This is a male sheep. It was kept for meat, milk, skins and wool.

e) This animal lived in the desert and scavenged for food. It was linked with death and the God Anubis.

f) This insect represented the Sun God, Ra. It was a sign of rebirth after death. The Egyptians often put a carved stone of this animal inside a mummy.

g) This animal is very poisonous and spits venom. It was worn as a symbol of protection by Egyptian kings.

h) This huge animal was a danger to boats and people on the River Nile.

## B: Now read about Egyptian cats and complete the gaps with words from the box.

### Cats in Ancient Egypt

Cats were very important in Ancient Egyptian 1. \_\_\_\_\_. They caught mice and rats and could kill 2. \_\_\_\_\_ snakes like cobras. Slowly the cat became more and more 3. \_\_\_\_\_ until the Egyptians treated it as a God.

The Egyptians worshipped the cat Goddess Bast (with a cat's 4. \_\_\_\_\_) or Bastet (full cat form). Bastet was the protector of 5. \_\_\_\_\_ and cats.

Cat symbols were often found on the walls of tombs with 6. \_\_\_\_\_. Some cats in Ancient Egypt were mummified when they died. In the city of Bubastis the remains of over 300,000 cat mummies were found!

## Ex C: Write about your favourite Egyptian animal in the box:

My favourite Egyptian animal is \_\_\_\_\_

---



---



---